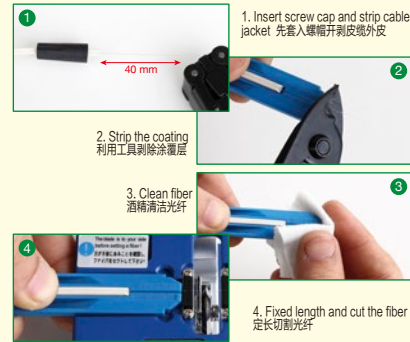


**SC-APC(UPC)-B Flat cable type 预埋式
Quick connector assembly instructions
现场组装光纤连接器说明书**



**Please read before assembling:
使用前请阅读:**

Must cut the fiber by intact cleaver. The only premise is that forbid to cut the fiber by any other way, make the device can not connector. The total length of cutting as picture. make sure the bare fiber in the range of 6-8mm. Press the cable into the groove and keep the fiber slightly bending not straighten. close the screw cap then lock switch. Great loss or fiber cut caused by cut the fiber too long, the length bare fiber >10mm. Not use cleaver, abnormal cutting will make the communication outage.

必须使用完好的切割刀切割光纤, 唯一前提。禁止其他任何方式切断光纤, 器件无法接通。切割总长度如图所示, 确认裸纤在6-8mm范围。穿入光纤保持微弯切勿拉直, 先拧螺帽后锁开关。损耗大或断纤是切纤超长, 裸纤长度>10mm造成。未使用切割刀, 非正常切割一定会造成通信中断。

SC-APC(UPC) Flat cable type 预埋式

**Embedded Quick Assembly Connector
光纤快速连接器**

